

17.1

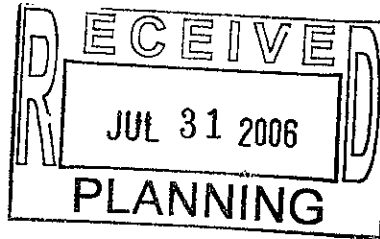
Wetland Resources, Inc.

Delineation / Mitigation / Restoration / Habitat Creation / Permit Assistance

9505 19th Avenue S.E.
Suite 106
Everett, Washington 98208
(425) 337-3174
Fax (425) 337-3045

July 28, 2006

SR2/SR9, LLC
Attn: Mike Reid
PO Box 1282
Bellevue, WA 98009



RE: Preliminary Wetland and Stream Reconnaissance and Habitat Evaluation Summary for the Proposed UGA Expansion Area of SR2 and SR9

In July of 2006 *Wetland Resources, Inc.* evaluated an assemblage of properties with a combined area of approximately 350 acres. This assemblage is generally located northwest of the intersection of the SR2 and SR9 with a small area located northeast of the same intersection. These properties represent a combination of residential, agriculture, commercial, and open space located just north of the city of Snohomish in Urban Snohomish County, Washington. The purpose of this reconnaissance was to approximately locate and evaluate jurisdictional wetlands and streams and interpret required buffer widths per the Department of Ecology wetland rating system for western Washington as part of the Urban Growth Area Expansion process for the City of Snohomish.

Site Description

These parcels have been managed as agriculture, forest plantations, and residences for many decades and are primarily vegetated with immature Douglas fir, pasture and residential landscaping. Logging roads, skidder trails, farm roads, and cattle paths exist throughout the parcels. Much of the forested area on the western portion of the investigation area is grazed and the forest on the eastern portion of the investigation area is extremely dense. Topography of the site generally has a moderate to steep west aspect slope on the western portion, relatively flat in the central portion and a moderate east aspect on the eastern portion. There is also a moderate west aspect slope on the western side of SR9.

Methodology

Wetlands were evaluated using the Washington State Wetlands Identification and Delineation Manual March 1997 and the Federal Manual for Identifying and Delineating Jurisdictional Wetlands 1989.

Reconnaissance

Wetlands were generally identified using several techniques including on-site investigation, Snohomish County Critical Area Mapping, National Wetland Inventory Mapping, and Aerial photo evaluation. Most of the property located within the investigation area was walked, however small areas were unaccommodating at the time of investigation. This method was chosen as a reasonable approach to approximately locating any significant wetlands and stream on site within the feasibility review period.

Wetland and Stream Rating - City of Snohomish

The Department of Ecology wetland rating system is a relatively new system that is being adopted throughout most jurisdictions in western Washington. The system involves filling out a detailed function and value form for each wetland. The end product is a numeric rating for water quality function, hydrologic function and habitat function. DOE recommended buffers are based on a

During site visits to conduct wetland reconnaissance in July 2006, wildlife biologist Jason Knight of *Wetland Resources Inc.*, briefly noted wildlife species and habitats. Short visits to each of the habitats included abbreviated visual and aural point counts and a quick evaluation for signs of past and current wildlife markings and activity. 22 wildlife species were detected and 5 habitat units were identified on site. Habitats noted include mixed medium-aged forests, a shrub-dominated clearcut, upland/wetland pastures, landscaped residential zones, and disturbed meadow.

Wildlife species typical of these habitat types were detected and include townsend mole (*Scapanus townsendii*), bobcat (*Lynx rufus*), mountain beaver (*Aplodontia rufa*), townsend chipmunk (*Tamias townsendii*), douglas squirrel (*Tamiasciurus douglasii*), eastern gray squirrel (*Sciurus carolinensis*), voles (*Microtus* spp.), eastern cottontail (*Sylvilagus floridanus*), snowshoe hare (*Lepus americanus*), mule deer (*Odocoileus hemionus*), red-tailed hawk (*Buteo jamaicensis*), northern flicker (*Colaptes auratus*), red-breasted sapsucker (*Sphyrapicus ruber*), barn swallow (*Hirundo rustica*), violet-green swallow (*Tachycineta thalassina*), golden-crowned kinglet (*Regulus satrapa*), black-capped chickadee (*Parus atricapillus*), dark-eyed junco (*Junco hyemalis*), American robin (*Turdus migratorius*), swainson's thrush (*Catharus ustulatus*), song sparrow (*Melospiza melodia*), and spotted towhee (*Pipilo macularia*).

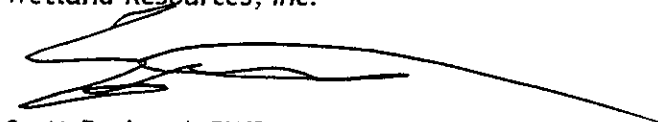
Many additional species are expected to use the site. Priority Habitat and Species (PHS) maps from the Washington State Department of Fish and Wildlife (WDFW) were not obtained nor reviewed to determine the presence of any endangered, threatened, sensitive, or priority species on the subject properties. Priority wildlife species may exist on site and may be detected through a detailed wildlife study.

General Conclusions

Wetland Resources, Inc. believes that the wetland and stream map produced as a result of intense field and office work is a reasonably accurate depiction of wetlands and streams within the investigation area. We would not expect boundaries to change measurably, however the attached map does not represent a delineation or survey. A full delineation will be required and survey will be required as part of any development activity.

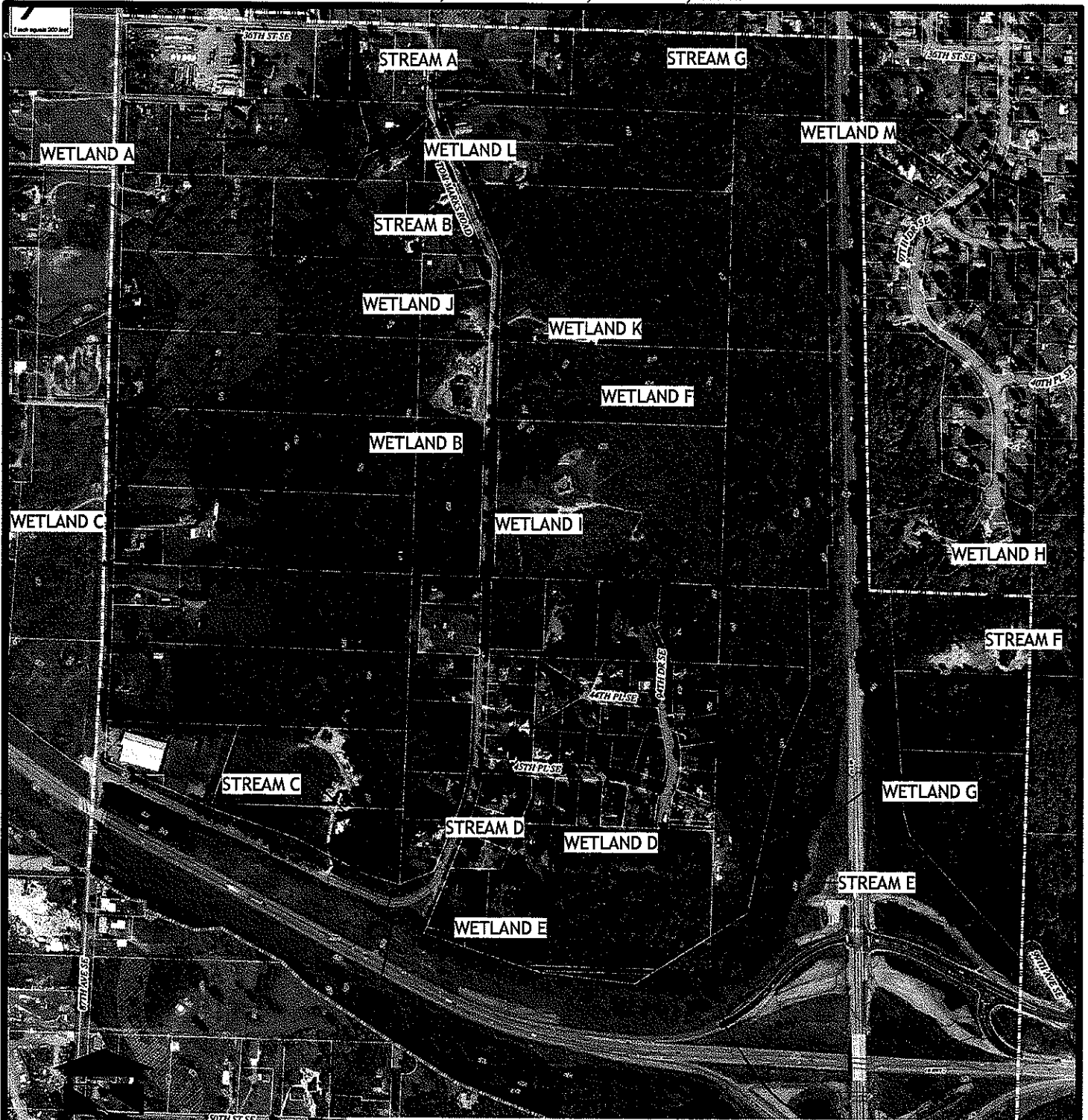
Cordially,

Wetland Resources, Inc.



Scott Brainard, PWS
Principal Wetland Ecologist

WETLAND RECONNAISSANCE MAP
SR2/SR9 UGA EXPANSION AREA
SECTION 36, TOWNSHIP 29N, RANGE 5E, W.M.



**PLEASE NOTE: THIS MAP DOES NOT REPRESENT A DELINEATION.
 WETLAND BOUNDARIES ARE APPROXIMATE FOR DISCUSSION AND
 PLANNING PURPOSES ONLY.**

Legend

	City Limits		Wetland
	UGA		Stream
	UGA Expansion		
	Wetlands Inventory		
	Major		
	Snohomish Co. GIS Cr		

Wetland Resources, Inc.
 Delineation / Mitigation / Restoration / Habitat Creation / Permit Assistance
 9505 19th Avenue S.E. Suite 106 Everett, Washington 98208
 Phone: (425) 337-3174
 Fax: (425) 337-3045
 Email: mailbox@wetlandresources.com

WETLAND RECONNAISSANCE MAP
SR2/SR9 UGA EXPANSION AREA
 Snohomish County, WA

SR2/SR9, LLC
 Attn: Mike Reid
 PO Box 1282
 Bellevue, WA 98008

Drawn by: S. Brainard
 Sheet 1/1
 WRI# 06341
 Date: July 31, 2006